



#### Reliable

Exact level measurement in abrasive and aggressive seawater

#### Cost effective

Low installation and integration costs

#### User friendly

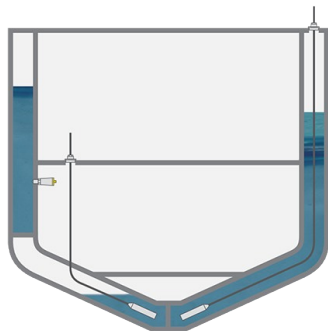
Maintenance-free operation due to seawater resistant materials

## Ballast water tanks

### Level measurement in the forepeak, wing and double bottom tanks with ballast water

The ballast water measurements in the wing and double bottom tanks go directly into the control system for the ship trim, draught and list. Since these measuring points are virtually inaccessible during operation on board, reliability and stability are an absolute must. Pressure shocks, abrasive sand particles and seawater place additional heavy demands on the instrumentation.

[More details](#)



#### VEGAWELL 52

Hydrostatic submersible pressure transmitter for level measurement in the ballast water tank

- Reliable, durable and robust, seawater-resistant sensors
- Ceramic measuring cell for exact and long-term stable measurement, even with pressure shocks and abrasion
- Simple installation from above or the side

[Show Product](#)



#### VEGABAR 28

Hydrostatic pressure sensor for level measurement in the ballast water tank

- Reliable measurement, long service life
- User-friendly, wireless setup and diagnostics with smartphone
- Easy to install lateral mounting arrangement

[Show Product](#)

PRO

BASIC

**VEGAWELL 52**  
[Show Product](#)



**Measuring range - Pressure**  
 0 ... 60 bar

**Process temperature**  
 -20 ... 80 °C

**Process pressure**  
 -

**Accuracy**  
 0.1 %

**Materials, wetted parts**  
 PVDF  
 316L  
 Duplex (1.4462)  
 FEP  
 PE  
 1.4301  
 Titanium

**Seal material**  
 EPDM  
 FKM  
 FFKM

**Protection rating**  
 IP66/IP67  
 IP68

**Output**  
 4 ... 20 mA  
 Two-wire: 4 ... 20 mA/HART

**Ambient temperature**  
 -40 ... 80 °C

**VEGABAR 28**  
[Show Product](#)



**Measuring range - Pressure**  
 -1 ... 60 bar

**Process temperature**  
 -40 ... 130 °C

**Accuracy**  
 0.3 %

**Materials, wetted parts**  
 PVDF  
 Duplex (1.4462)  
 Ceramic  
 316/316L

**Threaded connection**  
 $\geq G\frac{1}{2}$ ,  $\geq \frac{1}{2}$  NPT

**Hygienic fittings**  
 Clamp  $\geq 2"$ , DN50 - DIN32676, ISO2852  
 Clamp  $\geq 1"$  - DIN32676, ISO2852  
 Clamp  $\geq 1\frac{1}{2}"$  - DIN32676, ISO2852  
 Slotted nut  $\geq$  DN25 - DIN 11851  
 Slotted nut  $\geq$  DN32 - DIN 11851  
 SMS 1145 DN51  
 SMS DN38  
 Hygienic fittings  $\geq$  DN25 - DIN11864-1-A  
 Hygienic fittings  $\geq$  DN40 - DIN11864-1-A  
 Varivent N50-40  
 SMS DN25  
 Ingold connection PN10  
 Varivent F25

**Seal material**  
 EPDM  
 FKM  
 FFKM

**Protection rating**  
 IP65  
 IP68 (0,5 bar)/IP69

**Output**  
 4 ... 20 mA  
 Three-wire (PNP/NPN, 4 ... 20 mA)  
 IO-Link

**Ambient temperature**  
 -40 ... 70 °C