



### Reliable

Reliable detection of the minimum level protects against false air in the combustion chamber

### Cost effective

Continuous supply of waste material ensures uniform combustion

### User friendly

Crane driver receives accurate indication of the filling height

## Incinerator feed chute

### Detection of the level in the feed chute

After the crane system lifts the waste from the waste bunker and drops it to the feed chute, in the lower part of the chute, a hydraulic piston pushes the waste onto the combustion grate. It is important that waste in the chute is always at an optimal level and uniformly distributed. This prevents air from leaking into the furnace and ensures a constant supply of fuel for combustion. For that reason the minimum level in the feed chute has to be monitored and the resulting data displayed to the crane operator.

[More details](#)

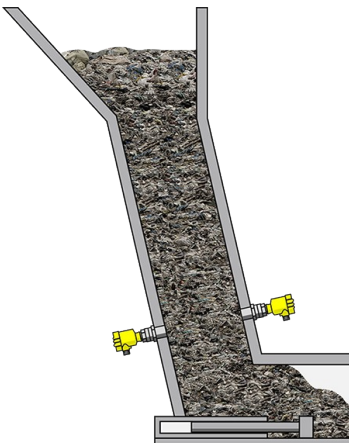


### VEGAMIP 61

Monitoring the minimum filling height in the feed chute with radar

- Reliable, non-contact level detection
- Wear and maintenance-free operation
- Easy installation outside of the chute

[Show Product](#)



**VEGAMIP 61**  
[Show Product](#)



**Measuring range - Distance**

100 m

**Process temperature**

-40 ... 80 °C

**Process pressure**

-1 ... 4 bar

**Version**

hygienically encapsulated horn antenna  
 for separate horn antenna  
 with horn antenna ø 40 mm  
 with horn antenna ø 48 mm  
 with horn antenna ø 75 mm  
 with horn antenna ø 95 mm  
 with plastic horn antenna ø 80 mm  
 Horn antenna ø 1½"  
 with encapsulated horn antenna

**Materials, wetted parts**

PTFE  
 316L  
 1.4848  
 PP

**Threaded connection**

G1½, 1½ NPT

**Flange connection**

≥ DN50, ≥ 2"

**Hygienic fittings**

Slotted nut ≥ 2", DN50 - DIN 11851  
 Varivent ≥ DN25  
 DRD connection ø 65 mm  
 for NEUMO BioControl D50 PN16 / 316L

**Seal material**

FKM  
 FFKM

**Housing material**

Plastic  
 Aluminium  
 Stainless steel (precision casting)  
 Stainless steel (electropolished)